

Bracket transfer/etching masks, bracket transfer splints

Materials & Accessories

Fabrication:

Bracket transfer splints:

- Erkoflex transparent, 2.0 mm, soft, flexible, excellently formable material with good memory
- Erkoflex-95 transparent, 1.5 mm, properties as Erkoflex but harder

Bracket transfer/etching masks:

- Erkolen, 1.0 mm, only recommended when using a pressure forming unit (Erkopress)
- Cover templates (110 900), water soluble adhesive (for ex. UHU universal adhesive without solvents), also syrup-like sugar water can be used, Isolac (624 050)

Model preparation:

- High-fusing wax (725 080) for filling bubbles in the plaster

Finishing:

- Special scissors (220 300) for cutting out the desired shape, Lisko-S (223 200) for smoothing the edges

Hints

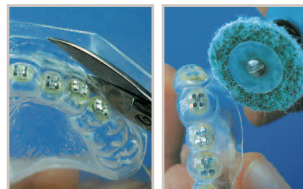
- Areas of the model (exterior vestibulum, oral floor) that obstruct the adaptation have to be removed. Remove sharp plaster edges.
- The Erkoflex-types have a very high memory, they bound to original shape.
- Remove the ex works applied insulating foil before thermoforming, therefore, when using Erkoflex insulate (Isolac) the models before thermoforming.
- For easier removal of the foil after glueing the brackets, put small rubber rings around the brackets before thermoforming (not in case of bracket transfer/etching masks).
- When producing bracket transfer/etching masks, the places where the brackets should be glued (bracket base) are cut out with a scalpel. The etching agent will be applied through these holes and then the brackets will be glued on.

1. Glue brackets with water-soluble adhesive onto the model and put the rubber rings around them (not for bracket transfer/etching masks). If the model has a flat trimmed base, it can be placed onto the model disc...



2. ...for thermoforming, otherwise embed the model that way into the granules that the tooth alignment plus app. 7 mm are visible. Cover granules with a cover template. Remove insulating foil before thermoforming.

3. To dissolve the adhesive put the model with foil for app. 10 min. into water. Take off the foil and cut it out. The splint should pass the gingival margin with about 5 mm. Smooth the edges with Lisko-S (10 000 rev./min.).



4. Depending on how many brackets should be glued on one time, they are segmented in groups or single. Thereby the cut should always be up to the palatal/lingual-occlusal edge.

5. To glue the brackets, the single segments can now be lifted without deforming the foil. Remove the foil after hardening of the adhesive.



6. Bracket transfer/etching mask out of Erkolen with cut out etching and transfer windows.