

Drilling-, planning- and X-ray templates, orientation splints

Materials & Accessories

Fabrication:

- Erkodur, hard 1.0 - 3.0 mm
- Resilit-S (817 501) (817 503) autopolymerising acrylic to polymerise the drilling tubes
- Isolac (624 050) for model insulation

Model preparation:

- If necessary, parallelometer to mark the prosthetic equator.
- Erkogum (110 844) for blocking out, high-fusing wax (725 080) for filling bubbles in the plaster.

Finishing:

- Recommendation: Finishing set Quick 2 (110 877) with fissure bur, rightward cutting, left spiral (110 836) for rough cutting out, HSS twist drill (110 876) for cutting out the desired shape, crosscut tungsten carbide bur (110 837) for fine grinding, to prepolish the edges, Lisko-S (223 200) and narrow interdental spaces, Liskoid (223 205).
- Polishing set (110 878) to polish Erkodur and Erkoloc-pro, hot-air burner (177 540) to polish Erkoflex-95.

Hints

- Areas of the model (exterior vestibulum, oral floor) that obstruct the adaptation have to be removed. Remove sharp plaster edges.
- In order to avoid the creation of tension cracks brush the area that has to be built up with Resilit-S with little monomer before the splint is cut out or taken off the model.
- Finishing and thermoforming see stabilization splints etc.

Drilling template

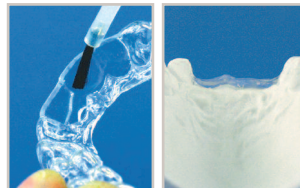
Thermoforming material: Erkodur, 2.0 mm

1. Place ready-made teeth onto the edentulous space. Duplicate the model. Embed the duplicate into the granules according to the size of the desired splint and thermoform, see stabilization splints.



2. In this case finish according to the illustration as described under stabilization splints.

3. Cut out the space for the drilling tubes (or balls) as shown on the picture, the complete incisal and palatal part of the respective frontal teeth.



4. Apply the acrylate (Resilit-S) on the adjustable area using only little monomer.

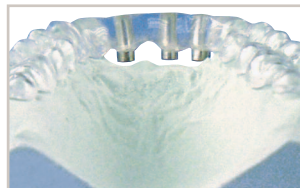
Fill the desired free area between the splint and the mucosa with Erkogum.

5. Place the drilling tubes into the Erkogum material. For the alignment customary devices can be used.



6. It is necessary that Erkogum seals the area that will be filled with acrylate, if necessary, add Erkogum. Now fill in the acrylate (Resilit) and polymerise in a polymerisation unit.

7. Finished drilling template.



8. Finished drilling template.

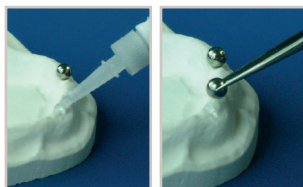
Pay attention to the cleaning, maintenance and sterilisation instructions (pflege_E.pdf).

Orientation splint

Thermoforming material: Erkodur, 1.5 mm

9. Thermoforming and finishing as described under stabilization splints.

Fix balls or similar with quick-acting glue (270 501) onto the desired position at the model.



10. Thermoform over the balls. This way the balls are firmly integrated in the splint.

Finish as described under stabilization splints.