

Temporary appliances

Materials & Accessories

Fabrication:

- Moulding as negative mould without bonding to acrylics for temporaries: Erkolen, 0.8 and 1.0 mm
- Moulding with bonding to acrylics for temporary appliances: Erkodur-C, 0.6 - 1.0 mm
- Moulding with bonding to acrylics for temporaries by the PV-Primer: Erkodur, 0.6 - 1.0 mm, Erkodur-A1/A3, 0.6 and 1.0 mm
- PV-Primer for a durable combination of cartridge acrylics and liquid/power acrylics with the foil types Erkodur (Erkodur-C only with cartridge acrylics)
- For model insulation and shrinkage compensation thermoform the ex works applied insulating foil together with the desired plate, in doing so the insulating/shrinkage compensation foil has to show towards the model (otherwise Isolac (624 050), only insulation).
- Cover templates (110 900) to cover the granules when using Erkolen (less loss of granules) (not absolutely necessary for the Erkodur types).

Model preparation:

- Erkogum (110 844) for blocking out, high-fusing wax (725 080) for filling bubbles in the plaster.

Finishing:

- Moulding: HSS twist drill (110 876) or scissors (220 300)
- Temporary appliance: crosscut tungsten carbide bur (110 837) for fine grinding, Lisko-S (223 200) for prepolishing the edges and Liskoid (223 205) for prepolishing narrow interdental spaces, polishing set (110 878) for polishing

Hints

- If the temporary appliance consist of a compound of foil and acrylic this leads to a considerable reinforcement of the temporary appliance.
- In the interdental gaps of the anatomic cast ready-made teeth or plaster teeth taken from other models can be fixed with Erkogum or high-fusing wax.
- Model areas (exterior vestibulum, oral floor) which obstruct the thermoforming process have to be removed. Remove sharp plaster edges.
- With suitable acrylics the adaptation can be done in the mouth, otherwise on the prepared model (described here).
- Inject the cartridge acrylic onto the still humid PV-Primer into the mould.

Temporary appliance combined of foil and acrylic

Thermoforming material: Erkodur, 0.6 - 1.0 mm, Erkodur-A1/A3, 0.6 and 1.0 mm • Erkodur-C, 0.6 - 1.0 mm
In regard to fabrication and finishing the materials do not differ.

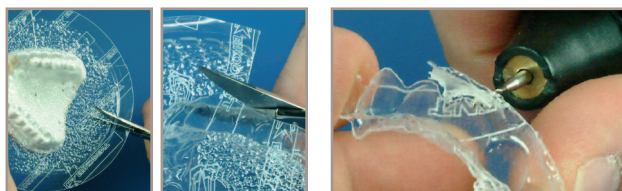
1. Fixed ready-made teeth.

Embed the models so far into the high grade steel granules that only the thermoforming area plus 3 mm protrude from the granules. If necessary, cover the granules (cover templates).



2. Thermoform and allow to cool down.

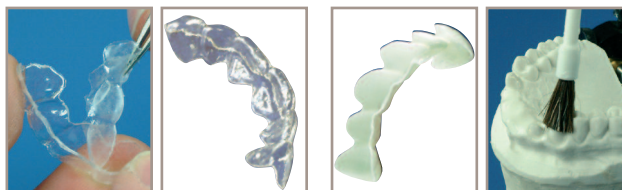
3. Cut in several times with the scissors towards the model for an easier removal. Remove the foil from the model and roughly cut it out.



4. Cut the desired shape with the HSS twist drill (> 20 000 rev./min.). To avoid raising the bite, the cervical border should be shortened by app. 1 mm.

5. Pull the insulating foil off.

Finished mould out of Erkodur or Erkodur-C.

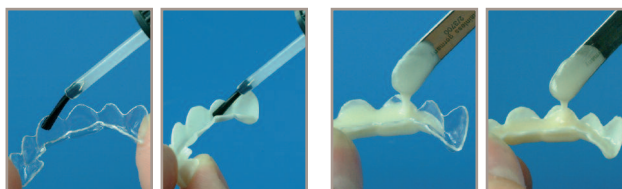


6. Finished mould out of Erkodur-A1.

Place the models into the articulator and articulate.

Insulate the model for the temporary appliance (Isolac).

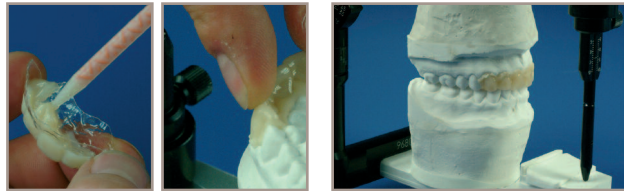
7. For a durable combination the inner surface of Erkodur and Erkodur-A1/A3 have to be brushed with PV-Primer. With the use of cartridge acrylics also Erkodur-C.



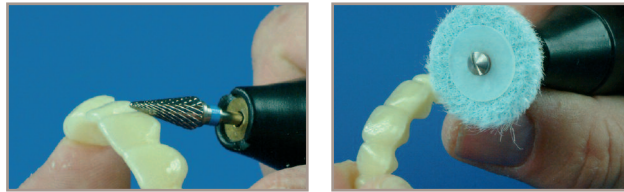
8. Pour in the acrylics in tough-flowing condition or inject with the cartridge (9).

9. Press the mould onto the edentulous area.

With suitable, mostly cartridge acrylics the adaptation can also be done in the mouth.



11. Grind the edges with the crosscut tungsten carbide bur (> 20 000 rev./min.).



13. Smooth and prepolish narrow areas with Liskoid (10 000 rev./min.).

If desired, polish the prepolished areas with the polishing set.



10. To avoid a raised bite and to compensate for the thickness of the foil, put the temporary appliance into occlusion with the opposing bite.

12. Smooth and prepolish the edges with Lisko-S (10 000 rev./min.).

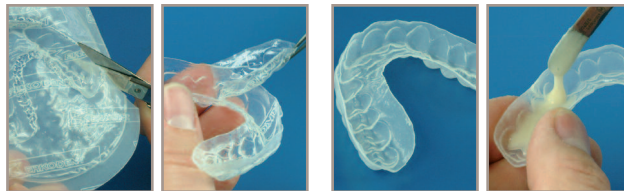
14. Finished, break-stable temporary appliance out of a compound of foil (Erkodur or Erkodur-C) and acrylic.

Temporary appliance, only made of acrylic, fabricated with a negative mould

Thermoforming materials: Erkolen, 0.8 and 1.0 mm
Erkolen does not bond to acrylics for temporary appliances.

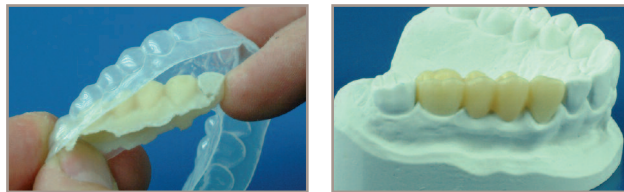
15. Proceed as described in step 1 and 2.

Cut out the negative mould in a way that the edentulous area and at least one adjacent tooth on each side are included, see also step 16.



17. ...and firmly press the negative mould onto the edentulous area. To avoid a raised bite no acrylic may remain on the adjacent teeth.

After hardening take the blank off...



16. Pull off the insulating foil. Finished negative mould out of Erkolen. Insulate the model (Isolac). Pour in the acrylics in tough-flowing condition...

18. ...the negative mould. Finish as described in step 11 - 13
Finished temporary appliance.